



Laser Barrier Information Form

The information requested in this form will be used to determine the laser barrier appropriate for your installation. The specific information requested may usually be found in the specification pages of the manuals supplied by the laser manufacturer.

Illustration A

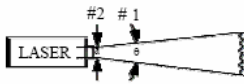


Illustration B

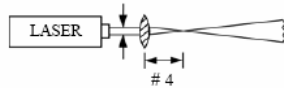
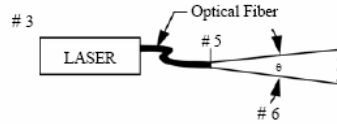


Illustration C



LASER PARAMETERS

Laser type: _____
 Wavelength(s): _____ (µm)
 Beam diameter at exit of laser: _____ (mm)
(see ill. A # 2)

Class: _____
 Beam divergence: _____ (mrad)
(see ill A # 1)

OPERATION MODE

Pulsed ()
 Pulse energy: _____ (J)
 Pulse length: _____ (sec.)
 Repetition rate: _____ (Hertz)

Continuous Wave ()
 Maximum Average Power: _____ (W)

DELIVERY OPTICS

Beam conduit ()
 Beam diameter just prior to lens: _____ (mm)
(see ill. B #3)
 Focusing lens: focal length: _____ (mm)
(see ill. B #4)

Fiber optics ()
 Fiber optic numerical aperture: _____
(see ill. C # 5)
 Cone angle: _____ (degrees)
(see ill. C #6)

SYSTEM DESIGN & GEOMETRICAL FACTORS

Worst case viewing distance (diffuse targets): _____ (in)
 Nominal distance(s) from laser aperture to barrier: max: _____ (feet) min: _____ (feet)

Form completed by:

Name: _____ Phone: _____
 Company: _____ Fax: _____
 Address: _____ Email: _____
 City: _____ State: _____ Zip Code: _____