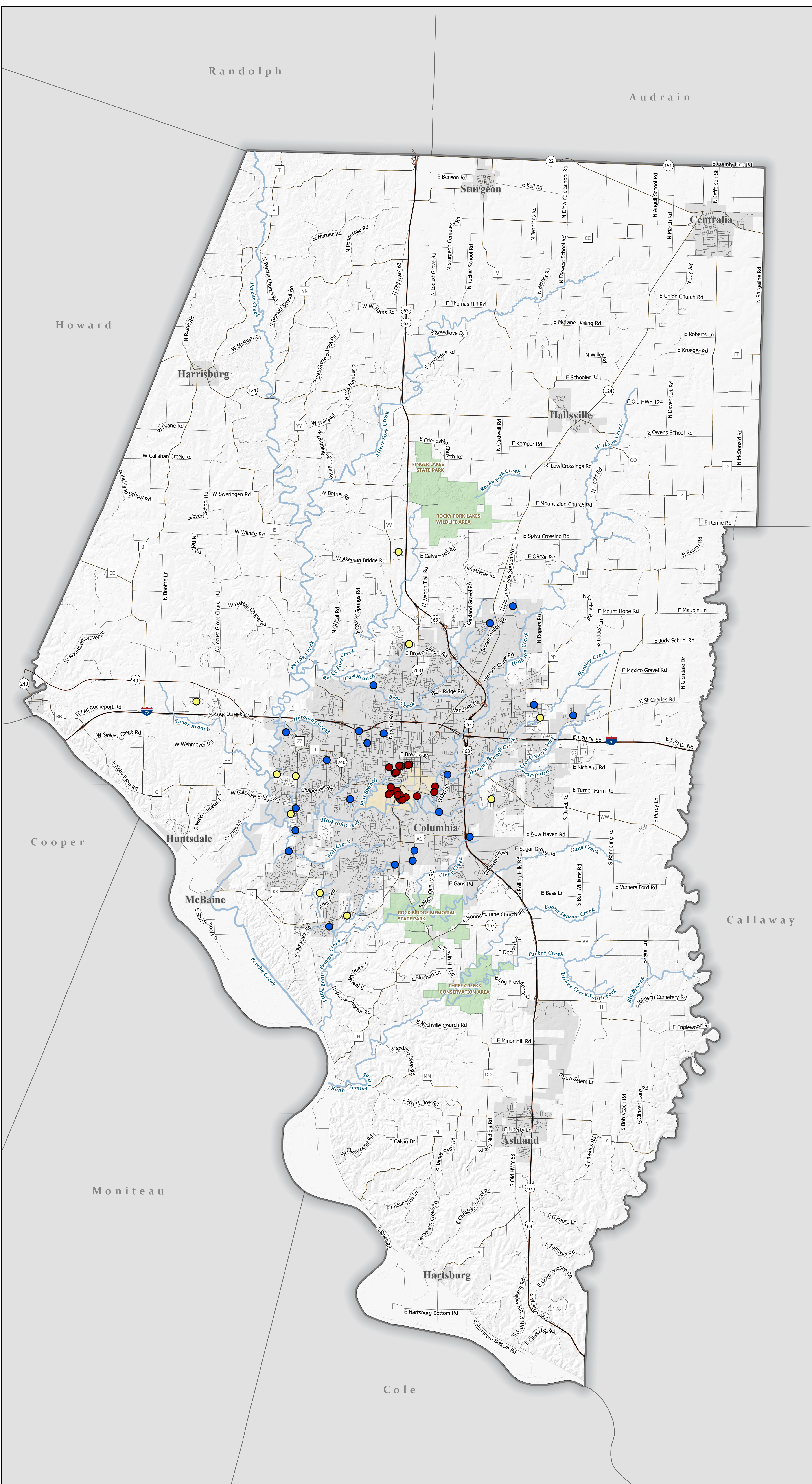


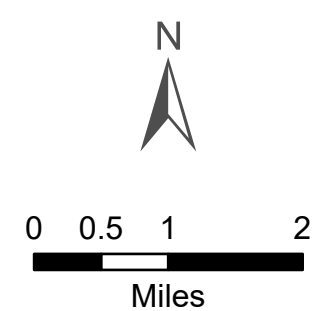
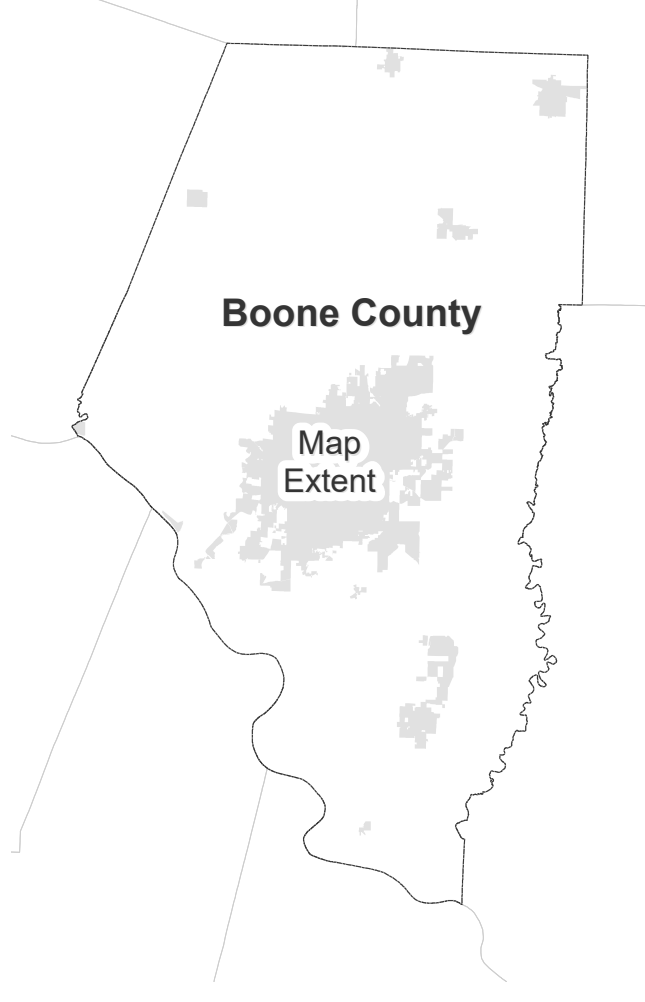


Boone County MS4 Outfall Locations



Legend

- MS4 Outfall Co-permittee
 - Boone County
 - City of Columbia
 - University of Missouri
- Streams
- Roads
- Parks and Conservation Areas
- University of Missouri Property
- Cities
- County Boundary



Date: 11/12/2024

Assessor Dataset Disclaimer:
 These maps were prepared for the inventory of real property based on the utilization of deeds, plans, and/or supportive data. In addition, map files are frequently changed to reflect changes in boundaries, lot lines, and other geographic features resulting from changes in ownership, development, and other causes. The existence, dimension, and location of features, as well as other information, should not be relied upon for any purpose without actual field verification. The County of Boone makes no warranty of any kind concerning the completeness or accuracy of information contained on these maps and assumes no liability or responsibility for the use or reuse of these maps by persons not affiliated with Boone County. Use of these maps by any person not affiliated with Boone County constitutes agreement by the user to assume full liability and responsibility for the verification of the accuracy of information shown on these maps.

- Sources Citation:**
- Boone County Assessor- City Polygon
 - County Polygon
 - Hillshade
 - Boone County GIS- Surrounding County Polygon
 - University of Missouri Property Polygon
 - MS4 Outfall Points
 - Boone County/ City of Columbia- Roads Centerline Line
 - Boone County Assessor/ City of Columbia Public Works Hydrology Drain Line

Developed By:
 Boone County GIS Department
 801 E. Walnut, Room 220
 Columbia, MO 65201-4890
 Phone: (573) 886-4325
 Fax: (573)-886-4322
www.showmeboone.com